



# HorseWorld's Discovery 2022

*The community we support*

## Who are our students?

✓ We received **321** student referrals in 2022, a **25%** increase on 2021.

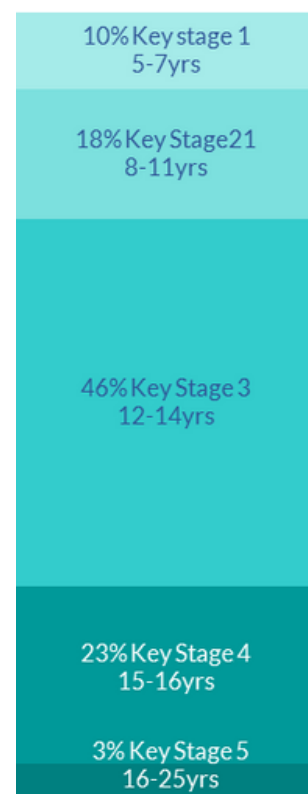
55% Individual Referrals

45% Group Referrals

✓ We delivered **2889** hours of teaching reaching **29** students per week in a 1-2-1 setting and **24** students per week in group settings.



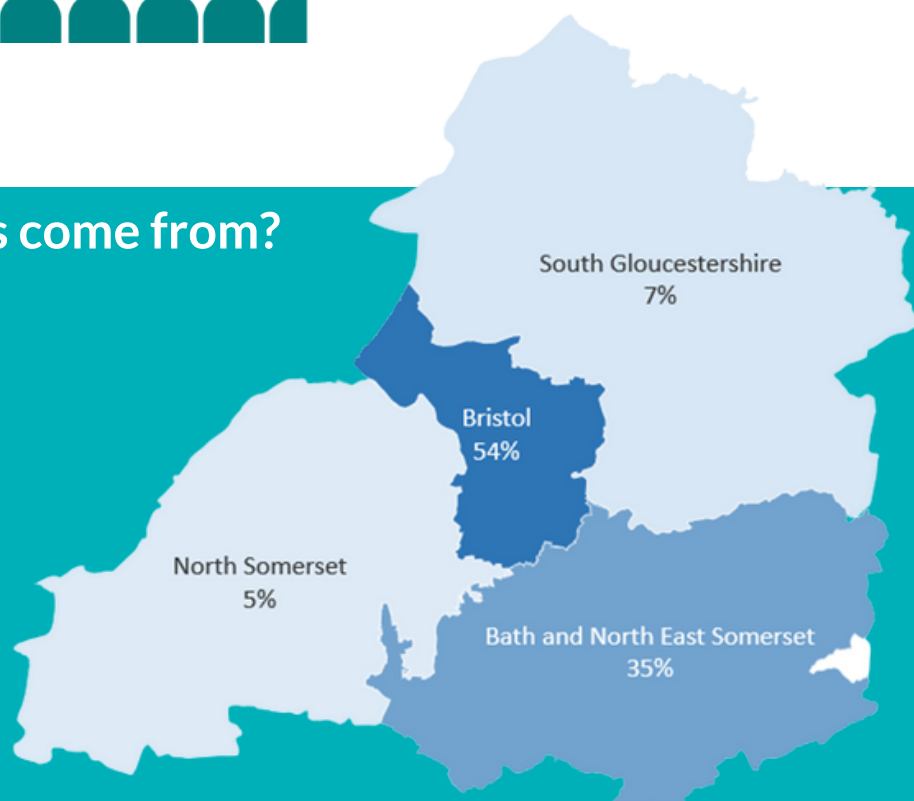
## Student age range



## Where do our students come from?

We reach over 200 young people per year from across **4** Local Authority regions.

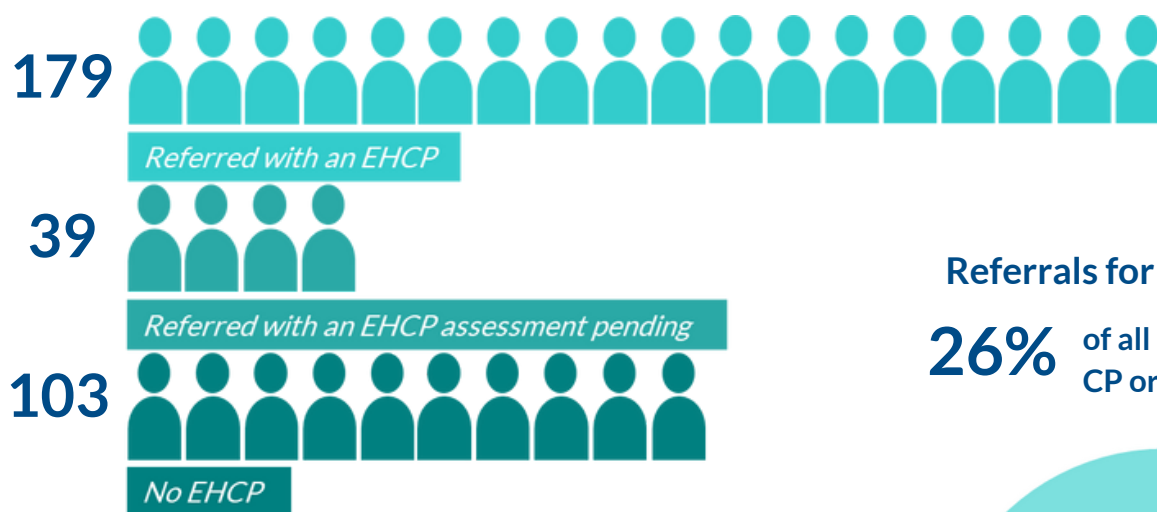
**1/4** of Bristol's referrals are from areas of highest deprivation need





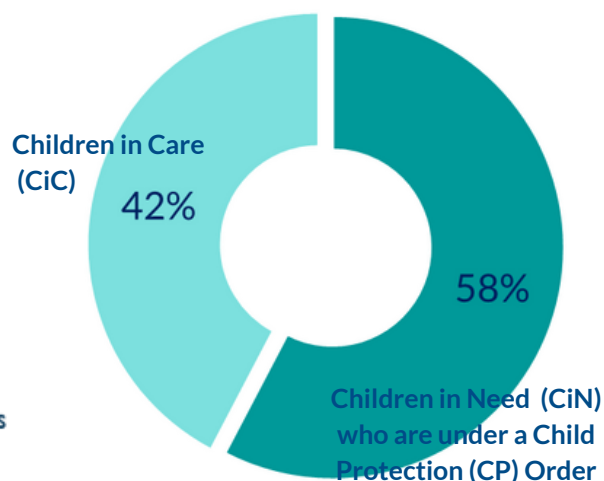
# Why are students referred to Discovery?

## Students referred with an Education, Health and Care plan

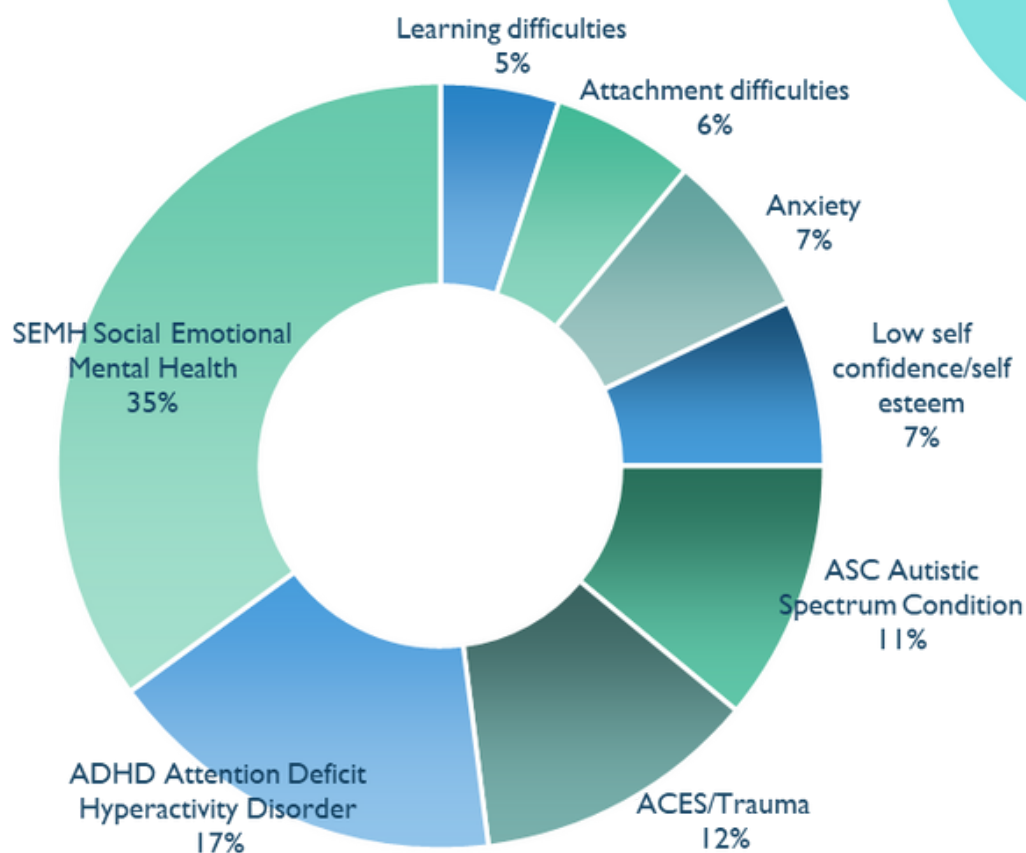


## Referrals for Children in Need

**26%** of all referrals have a CiN, CP or CiC and of those:



## Primary reason given for referral



**15%** of all referrals in 2022 had a diagnosis of Autistic Spectrum Condition or were awaiting diagnosis.

# Testimonials

*Discover horses,  
discover yourself*



## Parent

My son loves coming each week to Discovery, he feels a sense of community through the caring staff and his connection to the horses and ponies which has helped ease his anxiety, built his trust levels and improved his self esteem and communication skills. Discovery has given him a great feeling of self worth and belonging, enabling him to consider the next steps into college.

## Student

I enjoy coming to Discovery each week to be part of caring for the horses and ponies, and I always feel safe, welcome and happy when I am there.

## Feedback from a Deputy Head of a Secondary School

V has been a completely different girl in school since she started her sessions at Discovery and it was the most positive thing she has seen yet. V has had a very difficult two years and the difference the sessions are making is amazing. She hopes they can continue as long as possible, especially after the sudden death of her grandma, who V was really close to.

## Feedback from Pastoral Year Team Manager Specialist Centre

When we returned back from lockdown G was very withdrawn and highly anxious. She was not her usual self. She paced up and down the class and out into the playground lost in deep thoughts a lot more than she use to do. She often says she does not want to be here and no one is listening to her.

G is a bright, caring and thoughtful student who can find it very difficult to focus in a conventional classroom situation. Her difficulty focussing seems to be due to distracting thoughts and internal dialogue. She finds that physical movement helps to calm her when her thoughts are particularly distracting, such as by pacing in the classroom or in the outside area.

Since resuming regular Discovery sessions G visibly benefits from the physical activity she gets at HorseWorld and also the opportunity to develop empathy by looking after the animals. It is evident from her behaviour and the things she says that G greatly looks forward to the HorseWorld sessions and I see an improvement in her concentration and mood the next day. She seems more able to reflect on events and interacts more positively with the rest of the class on the days following her sessions, she is less scatty. She still paces but it isn't through anger or anxiety, she is more open to discussion and opinions and is much more patient.